



White Geely All Electric Box Truck Electric 26 Foot Box Truck

Our Product Introduction

for more products please visit us on vehicle-automobile.com

Basic Information

- Place of Origin: China
- Brand Name: Geely's
- Model Number: Geely's long-range pure electric truck has a range of 260 kilometers
- Minimum Order Quantity: 1 vehicle
- Price: \$30,000-\$40,000Dollar
- Packaging Details: Complete vehicle
- Delivery Time: 5-8 work days
- Payment Terms: T/T
- Supply Ability: 1000 vehicle

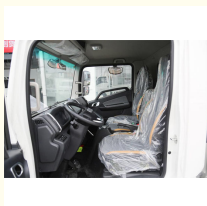


Product Specification

- Doors: 4
- Power: Electric
- Safety Features: ABS, Airbags, Etc.
- Transmission: Automatic
- Type: Electric EV Car
- Highlight: Geely Electric Box Truck, Geely All Electric Box Truck, White Electric 26 Foot Box Truck



More Images



Our Product Introduction

Product Description

Geely's long-range pure electric truck has a range of 260 kilometers

An electric cargo truck, also known as a pure electric truck, is a type of commercial vehicle designed for transporting goods using an electric motor as the primary source of propulsion. Here is a description of an electric cargo truck:

Electric drive system: An electric cargo truck is powered by an electric drive system, which utilizes a battery pack or lithium-ion batteries as the energy storage device. The electric drive system converts electrical energy into mechanical energy to propel the vehicle, eliminating the need for fuel combustion and resulting in zero emissions.

Cargo capacity: Electric cargo trucks have similar cargo capacities to traditional fuel-powered trucks. They typically feature sturdy cargo storage areas and loading capacities, and can be configured to accommodate different types and sizes of cargo, catering to various transportation needs.

Range: The range of an electric cargo truck depends on the battery capacity and the vehicle's load. With advancements in battery technology, modern electric cargo trucks have significantly increased their range, making them suitable for medium to short-haul transportation requirements.

Charging infrastructure: Electric cargo trucks require charging infrastructure to replenish their electric power. Charging times depend on the power of the charging equipment and the battery capacity, typically ranging from a few hours to several hours. The development of a robust charging network provides convenient charging options, including fast-charging stations and home charging equipment.

Quiet operation: Electric cargo trucks operate quietly compared to their internal combustion engine counterparts due to the absence of engine noise and vibration. This feature is beneficial for reducing noise pollution in urban environments and is

especially desirable for cargo operations in indoor and noise-sensitive areas.

Maintenance costs: Electric cargo trucks generally have lower maintenance costs compared to traditional fuel-powered trucks. The electric drive system consists of fewer moving parts, eliminating the need for tasks such as oil changes and exhaust system maintenance, resulting in reduced operating costs and maintenance downtime.

Environmental benefits: The zero-emission nature of electric cargo trucks makes them an environmentally friendly freight solution. With no tailpipe emissions, they help reduce air pollution and greenhouse gas emissions, contributing to improved urban air quality and a cleaner environment.

In summary, an electric cargo truck utilizes an electric drive system and offers cargo capacity, extended range, quiet operation, and lower maintenance costs. They provide an eco-friendly and sustainable option for freight transport, suitable for urban and short-haul transportation needs, and play a significant role in the evolving electric vehicle market.

With a battery life of up to 260km, the Remote Xingzhi H8E is smarter

In terms of appearance, the design style of the vehicle is mainly simple. The black grille on the center grille and the headlights on both sides adopt an integrated design, which effectively improves the integrity and beauty of the front face. It also comes standard with full LED headlights. , has more advantages in lighting brightness and service life.

In terms of motor, this Xingzhi H8E uses a permanent magnet synchronous motor with a peak power of 120 kilowatts. Thanks to the characteristics of the motor, it can be more relaxed and accelerate more rapidly when driving in urban areas. At the same time, the car uses a knob-type gear shift, which is simple and easy to operate. Even new card enthusiasts can easily control it.

In terms of battery pack, this Xingzhi H8E is equipped with CATL CTP battery with a capacity of 89.12kWh and a cruising range of more than 260 kilometers under C-WTVC operating conditions. In addition, the car can also choose from CATL 81.14/100.46/106.95kWh and Guoxuan 84.48kWh battery packs, which can meet the needs of different truck owners.

This Xingzhi H8E is equipped with an intelligent battery temperature control system, which can effectively improve the vehicle's battery life in winter. In addition, it only takes less than an hour to charge from 20%, and it only takes a meal or a break to fully charge. At the same time, the car is also equipped with a battery liquid cooling system, which can be quickly charged even in hot weather or after driving for a long time, and the battery is more stable and safer.

In terms of overall vehicle size, the length, width and height of the vehicle are 5995×2200×3130mm, and the wheelbase is 3360mm. The Xingzhi H8E in the actual photo is matched with a warehouse top, with dimensions of 4150×2100×2100mm (rail height 400mm). In addition, van, fence, refrigerated van and other tops are optional. Card lovers can choose according to the requirements. Choose based on your actual operational needs.

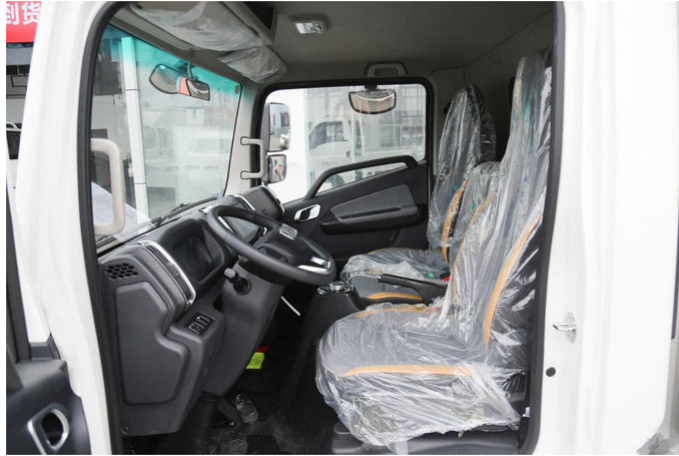
In terms of interior, the functional areas of this Xingzhi H8E are clearly divided, similar to the design of passenger cars. Even if it is the first time to operate it, there will be no problem. In addition, the car has also thoughtfully optimized the sitting posture. The 10-degree seat cushion inclination angle can effectively improve the leg support of the seat cushion. At the same time, the steering wheel is optimized to 59.5, making the driving more comfortable for card lovers.

In terms of configuration, this Xingzhi H8E is equipped with a multi-function steering wheel, a full LCD instrument panel, an electronic handbrake, a large central control screen, electric rearview mirror adjustment, etc. It is worth mentioning that the car can upgrade the large central control screen to The 12.1-inch high-definition floating center control large screen not only outshines many light trucks of the same level in terms of size, but can also implement more functions, such as 360-degree surround view, which allows the driver to control the situation around the vehicle at any time and reduce blind spots.

The appearance of this Xingzhi H8E can satisfy the trendy and fashionable pursuit of card enthusiasts, and its performance is also very good in the three most important aspects of electric vehicles. The highest optional battery pack is over 100 kWh, coupled with fast charging, it can effectively reduce the battery life anxiety of card friends. Finally, in terms of configuration, the car is also very rich, which can bring a more comfortable driving experience to card friends.







 **Sichuan Fushunte Automobile Co., Ltd.**

 +8613568891631  609965408@qq.com  vehicle-automobile.com

No. 15, Wuxing 4th Road, Wuhou District, Chengdu City