



## Buick Minivan MPV 7 Seater For Business Reception Family Travel

Our Product Introduction

for more products please visit us on [vehicle-automobile.com](http://vehicle-automobile.com)

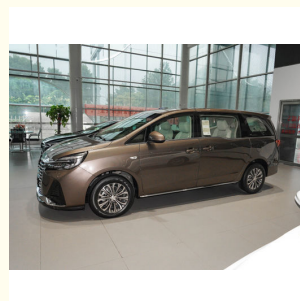
### Basic Information

- Place of Origin: China
- Brand Name: Buick
- Model Number: Buick Business reception family travel 7-seater business car gasoline automatic transmission two-wheel drive 4x2
- Minimum Order Quantity: 1 vehicle
- Price: \$37,000-\$50,000Dollar
- Packaging Details: Complete vehicle
- Delivery Time: 5-8 work days
- Payment Terms: T/T
- Supply Ability: 1000 vehicle



### Product Specification

- Body Type: MPV
- Doors: 4/5
- Drive Type: Front/Rear/All Wheel Drive
- Exterior Features: LED Headlights, Power Sliding Doors
- Fuel Type: Gasoline/Diesel
- Interior Features: Leather Seats, Climate Control, Navigation System
- Seats: 7 Seater
- Transmission: Manual/Automatic
- Highlight: Buick Minivan MPV, Minivan MPV 7 Seater, Business Reception MPV van



### More Images



### Product Description

#### Buick Business reception family travel 7-seater business car gasoline automatic transmission two-wheel drive 4x2

A 7-seat gasoline-powered commercial van is a versatile and efficient vehicle designed for business and commercial purposes. It is commonly used for transporting passengers in a comfortable and spacious environment, making it suitable for corporate transportation, airport shuttles, and other commercial applications.

A 7-seat gasoline commercial van typically features a well-designed and roomy interior with three rows of seating. The front row consists of the driver's seat and a front passenger seat, while the second and third rows offer additional seating for passengers. The seats are typically designed for comfort, with ample legroom and support for passengers during their journey.

These commercial vans are powered by gasoline engines, which provide a balance between performance and fuel efficiency. Gasoline engines are known for their smooth and responsive power delivery, making them suitable for urban driving and highway cruising. The engine size and specifications may vary depending on the specific model and manufacturer.

Fuel efficiency is an important consideration for commercial vans, as it directly impacts operating costs. Many gasoline-powered vans incorporate technology such as direct fuel injection, variable valve timing, and engine management systems to optimize fuel consumption and reduce emissions.

In terms of safety, 7-seat gasoline commercial vans are equipped with standard safety features to ensure the well-being of passengers and drivers. These may include airbags, seat belts, anti-lock braking systems (ABS), stability control, and traction control systems. Some models may also offer additional safety features such as blind-spot monitoring, lane departure warning, and rearview cameras for enhanced visibility and collision avoidance.

Commercial vans often come with additional features and amenities to enhance passenger comfort and convenience. These

Our Product Introduction

may include air conditioning systems, entertainment systems with audio and video capabilities, USB charging ports, cup holders, and storage compartments for personal belongings.

In summary, a 7-seat gasoline commercial van is a versatile and efficient vehicle designed for commercial purposes. It offers a spacious and comfortable interior, powered by a gasoline engine that provides a balance of performance and fuel efficiency. With safety features, additional amenities, and a focus on passenger comfort, these vans are well-suited for various commercial applications where passenger transportation is required.

序号	Vehicle technical parameters	
1	Body size mm:	5238×1878×1776 (length×width×height)
2	Wheelbase mm:	3088
3	Vehicle fully loaded total mass kg:	2435
4	Vehicle curb weight kg:	1880
5	Rated number of passengers	7 people
6	Luggage volume L:	475/1605
7	suspension system	Front suspension MacPherson independent suspension, torsion beam non-independent suspension
8	Minimum ground clearance mm:	198
9	Minimum turning radius m:	6.15
10	Fuel type:	gasoline
11	Displacement ml	1998
12	Maximum rated power (kw/rpm)	174/5000
13	Maximum torque (Nm/rpm)	350/1500-4000
14	Acceleration performance 0-100km/h/s	7.85
15	Fuel and emissions systems	National VI emissions, No. 95
16	Axle load (front/rear)kg:	1210/1230
17	Front overhang/rear overhang mm:	1056/1094(mm)
18	Wheelbase (front/rear) mm:	1602/1605
19	Drive mode	Front wheel drive
20	transmission:	9-speed manual transmission
21	Top speed km/h:	195
22	Constant speed fuel consumption (L/100km)	6.5
23	Comprehensive operating condition oil (L/100km)	7.85
24	Maximum grade%	≥15
25	steering system	Electronic assistance
26	Tire specifications and models	225/60R17
27	Braking System	front disk rear disk
28	Number of tires	4
<b>Main vehicle configuration</b>		
29	aviation cabin door	
30	ABS+EBD	
31	central locking	
32	remote key	
33	Front electric doors and windows	
34	LED turn signal	
35	LED daytime running lights	
36	cloth seat	
37	Electrically adjustable exterior rearview mirrors	
38	Four-spoke multi-function steering wheel	
39	Manual sliding door	
40	Manual rear door opening	
41	Luxurious lighting welcome pedal	
42	6-way adjustable driver's seat	
43	Second row of multifunctional executive seats	
44	Back and forth sliding function	
45	BFI integrated body structure	
46	front airbag	
47	Front side airbags	
48	Speed-sensitive automatic door locking system	
49	Bosch ESP electronic stability control system	
50	TCS traction control system	
51	HSA hill assist system	
52	EPB electronic parking brake system	
53	Rear parking radar	
54	one-button start	
55	Engine remote start	
56	Intermittent boneless wipers	
57	Rear windshield wiper	
58	10-inch high-definition touch screen	









 **Sichuan Fushunte Automobile Co., Ltd.**

 +8613568891631  609965408@qq.com  vehicle-automobile.com

No. 15, Wuxing 4th Road, Wuhou District, Chengdu City