



## Leapao C11 Electric EV Car 5 Seats Ev Sedan Auto Transmission 4x2

Our Product Introduction

for more products please visit us on [vehicle-automobile.com](http://vehicle-automobile.com)

### Basic Information

- Place of Origin: China
- Brand Name: Fushunt
- Model Number: Leapao C11 pure electric sedan and bus 5 seats automatic transmission 4x2
- Minimum Order Quantity: 1 vehicle
- Price: \$30,000-\$40,000Dollar
- Packaging Details: Complete vehicle
- Delivery Time: 5-8 work days
- Payment Terms: T/T
- Supply Ability: 1000 vehicle

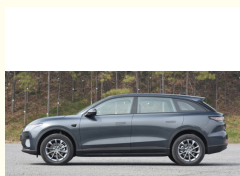


### Product Specification

- Acceleration: Fast Acceleration
- Braking: High Braking Performance
- Connectivity: Advanced Connectivity
- Maintenance: Low Maintenance
- Power: Electric
- Range: Long Range
- Reliability: High Reliability
- Safety: High Safety Standards
- Seating: 5 Seats
- TopSpeed: High Speed
- Type: Electric EV Car
- Highlight: Leapao C11 Electric EV Car, Electric EV Car 5 Seats, Leapao C11 Ev Sedan



### More Images



### Product Description

Leapao C11 pure electric sedan and bus 5 seats automatic transmission 4x2

A pure electric compact sedan is a small passenger car that relies solely on electric power for propulsion. It utilizes an electric motor as its primary source of propulsion, drawing energy from a battery pack instead of relying on a traditional internal combustion engine.

Pure electric compact sedans typically have a compact body size and design, making them well-suited for urban driving and daily commuting. They often feature modern and streamlined exteriors, prioritizing energy efficiency and environmental friendliness in their design.

The powertrain of these vehicles consists of a battery pack and an electric motor. The battery pack, usually comprised of

Our Product

lithium-ion batteries or other advanced battery technologies, stores electrical energy. The electric motor converts this electrical energy into mechanical energy, providing propulsion to the vehicle's drivetrain. The performance of the electric sedan is influenced by the battery pack capacity and the power output of the electric motor.

One significant advantage of pure electric compact sedans is their zero tailpipe emissions, making them environmentally friendly and reducing air pollution. They also offer a quieter driving experience due to the absence of a traditional internal combustion engine's noise and vibrations.

Charging is a crucial aspect of owning a pure electric compact sedan. Vehicle owners can charge their cars by plugging them into a standard household outlet or using dedicated charging equipment. The charging time depends on the battery pack capacity and the power output of the charging equipment. Public charging infrastructure is becoming increasingly available in many areas, providing convenient charging options for electric vehicle owners in urban environments.

Pure electric compact sedans often come equipped with advanced driver-assistance systems and safety features to provide a comfortable and safe driving experience. These features may include regenerative braking systems, stability control, brake assist systems, rearview cameras, and blind-spot monitoring.

In summary, a pure electric compact sedan is a small passenger car powered solely by electricity. It features a compact design, an environmentally friendly powertrain, and advanced driver-assistance systems. With zero tailpipe emissions, quiet operation, and the increasing availability of charging infrastructure, pure electric compact sedans are an increasingly popular choice for sustainable transportation and play an important role in urban mobility.

Vehicle technical parameters		
1	Car body dimensions (length × width × height) mm:	4750×1905×1675
2	Motor manufacturer	Jinhua Leapao New Energy Auto Parts Technology Co., Ltd.
	Vehicle manufacturer	Leipao Automobile Co., Ltd.
3	Wheelbase mm:	2930
4	Vehicle fully loaded total mass kg:	2410
5	Vehicle curb weight kg:	2035
6	suspension system	Front suspension MacPherson independent suspension,
7	Approach / departure angle	rear independent suspension
8	Front overhang/rear overhang mm	21/24
9	Axle load	860/960(mm)
10	Number of axes	1078/1332
11	Fuel consumption	2
12	NEDC pure electric cruising range	16
13	Number of tires	400km
14	Front wheelbase/rear wheelbase	6
15	Steering Type	1605/1595
16	Minimum ground clearance mm:	steering wheel
17	Battery Type	130
18	Fuel type:	Lithium iron phosphate battery
19	Battery energy:	pure electricity
20	engine model	69.2kWh
21	Motor type	single motor
22	Total motor torque	Permanent magnet/synchronous
23	Rated power kw(hp)/rpm:	360(N.m)
24	Maximum torque Nm/rpm:	200
25	Emission Standards:	197
26	Drive mode	National VI
26	transmission:	Front-wheel drive
28	Top speed km/h:	automatic transmission
29	Tire specifications and models	170
30	Braking System	235/60R18
31	Environmental protection standards	front disk rear disk
32	Rated passenger capacity (including driver)	GB17691-2005 (National VI)
Main vehicle configuration		
33	All-metal enclosed load-bearing body	
34	ABS8.0+EBD,	
35	Electric rearview mirror	
36	black halogen headlights	
37	middle gate	
38	front air conditioner	
39	central locking	
40	Visual reversing	
41	aluminum alloy wheels,	
42	Full vehicle electric doors and windows	
43	Driver's seat (main) airbag	
44	remote key	
45	12.8-inch touch LCD screen	
46	12 speakers	

47	Body metallic paint
48	high mounted brake light
49	Cab multifunctional storage box
50	Full car seat belt
51	Adjustable seat back
52	Electronic parking
53	Tire pressure display
54	Simple backup tool









**Sichuan Fushunte Automobile Co., Ltd.**



+8613568891631



609965408@qq.com



vehicle-automobile.com

No. 15, Wuxing 4th Road, Wuhou District, Chengdu City