



Xingzhi H8E Geely Electric Truck Electric EV Car With Two Wheel Drive

Our Product Introduction

for more products please visit us on vehicle-automobile.com

Basic Information

- Place of Origin: China
- Brand Name: Fushunt
- Model Number: Geely's pure electric cargo truck has a range of 260 kilometers with two-wheel drive, 4x2 automatic transmission
- Minimum Order Quantity: 1 vehicle
- Price: \$35,000-\$40,000Dollar
- Packaging Details: Complete vehicle
- Delivery Time: 5-8 work days
- Payment Terms: T/T
- Supply Ability: 1000 vehicle

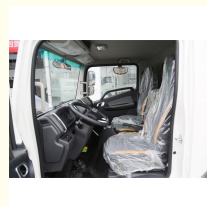


Product Specification

- Connectivity Features: Bluetooth, Wi-Fi, GPS
- Motor: Electric Motor
- Safety Features: ABS, Airbags, Traction Control
- Seating Capacity: 4-5 People
- Transmission: Automatic
- Type: Electric EV Car
- Highlight: Xingzhi H8E Geely Electric Truck, H8E Electric EV Car, H8E Geely EV Truck



More Images



Product Description

Geely's pure electric cargo truck has a range of 260 kilometers with two-wheel drive, 4x2 automatic transmission

A pure electric cargo truck, also known as an electric truck or e-truck, is a commercial vehicle designed for transporting goods and materials. It operates solely on electric power, utilizing an electric motor and a large-capacity battery pack for propulsion, eliminating the need for a traditional internal combustion engine.

Pure electric cargo trucks come in various sizes and configurations to accommodate different cargo capacities and transportation requirements. They can range from small light-duty trucks to heavy-duty trucks capable of carrying substantial loads.

The powertrain of a pure electric cargo truck consists of an electric motor, a power inverter, and a battery pack. The electric motor converts electrical energy from the battery pack into mechanical energy, providing the necessary power and torque to propel the truck. The battery pack stores the electrical energy and its capacity determines the range and operating time of the truck. The power inverter controls the flow of electricity between the battery and the electric motor.

One of the primary advantages of pure electric cargo trucks is their zero-emission operation. By eliminating tailpipe emissions, they contribute to reducing air pollution and improving overall environmental sustainability compared to conventional diesel-powered trucks. Additionally, the absence of an internal combustion engine results in quieter operation, reducing noise pollution in urban areas.

Charging infrastructure plays a critical role in operating pure electric cargo trucks. They can be charged at designated charging stations or depots using fast chargers or overnight charging with standard electrical outlets. The charging time depends on the battery pack capacity, the charging power, and the chosen charging method.

Pure electric cargo trucks often incorporate advanced technologies and features to enhance efficiency, safety, and overall performance. These may include regenerative braking systems to recover energy during deceleration, telematics systems for

Our Product Introduction

remote monitoring and diagnostics, and advanced driver-assistance systems for improved safety during operation.

In summary, a pure electric cargo truck is a commercial vehicle designed for transporting goods and materials, operating solely on electric power. It offers benefits such as zero-emission operation, reduced noise pollution, and potential cost savings on fuel and maintenance. With advancements in battery technology and charging infrastructure, pure electric cargo trucks are becoming an increasingly viable and sustainable option for freight transportation, providing a cleaner and quieter solution for commercial logistics.

With a battery life of up to 260km, the Remote Xingzhi H8E is smarter

In terms of appearance, the design style of the vehicle is mainly simple. The black grille on the center grille and the headlights on both sides adopt an integrated design, which effectively improves the integrity and beauty of the front face. It also comes standard with full LED headlights. , has more advantages in lighting brightness and service life.

In terms of motor, this Xingzhi H8E uses a permanent magnet synchronous motor with a peak power of 120 kilowatts. Thanks to the characteristics of the motor, it can be more relaxed and accelerate more rapidly when driving in urban areas. At the same time, the car uses a knob-type gear shift, which is simple and easy to operate. Even new card enthusiasts can easily control it.

In terms of battery pack, this Xingzhi H8E is equipped with CATL CTP battery with a capacity of 89.12kWh and a cruising range of more than 260 kilometers under C-WTVC operating conditions. In addition, the car can also choose from CATL 81.14/100.46/106.95kWh and Guoxuan 84.48kWh battery packs, which can meet the needs of different truck owners. This Xingzhi H8E is equipped with an intelligent battery temperature control system, which can effectively improve the vehicle's battery life in winter. In addition, it only takes less than an hour to charge from 20%, and it only takes a meal or a break to fully charge. At the same time, the car is also equipped with a battery liquid cooling system, which can be quickly charged even in hot weather or after driving for a long time, and the battery is more stable and safer.

In terms of overall vehicle size, the length, width and height of the vehicle are 5995×2200×3130mm, and the wheelbase is 3360mm. The Xingzhi H8E in the actual photo is matched with a warehouse top, with dimensions of 4150×2100×2100mm (rail height 400mm). In addition, van, fence, refrigerated van and other tops are optional. Card lovers can choose according to the requirements. Choose based on your actual operational needs.

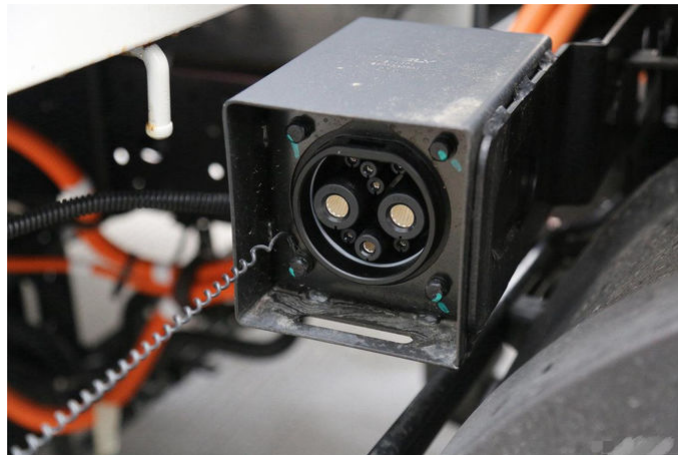
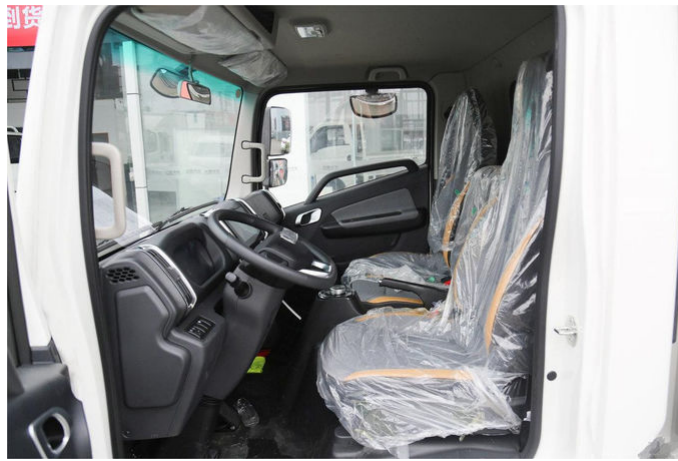
In terms of interior, the functional areas of this Xingzhi H8E are clearly divided, similar to the design of passenger cars. Even if it is the first time to operate it, there will be no problem. In addition, the car has also thoughtfully optimized the sitting posture. The 10-degree seat cushion inclination angle can effectively improve the leg support of the seat cushion. At the same time, the steering wheel is optimized to 59.5, making the driving more comfortable for card lovers.


In terms of configuration, this Xingzhi H8E is equipped with a multi-function steering wheel, a full LCD instrument panel, an electronic handbrake, a large central control screen, electric rearview mirror adjustment, etc. It is worth mentioning that the car can upgrade the large central control screen to The 12.1-inch high-definition floating center control large screen not only outshines many light trucks of the same level in terms of size, but can also implement more functions, such as 360-degree surround view, which allows the driver to control the situation around the vehicle at any time and reduce blind spots.

The appearance of this Xingzhi H8E can satisfy the trendy and fashionable pursuit of card enthusiasts, and its performance is also very good in the three most important aspects of electric vehicles. The highest optional battery pack is over 100 kWh, coupled with fast charging, it can It effectively reduces the battery life anxiety of card friends. Finally, in terms of configuration, the car is also very rich, which can bring a more comfortable driving experience to card friends.







 **Sichuan Fushunte Automobile Co., Ltd.**

 +8613568891631
  609965408@qq.com
  vehicle-automobile.com

No. 15, Wuxing 4th Road, Wuhou District, Chengdu City