



## Dayun Four-wheel Drive Off-road Grab Cargo Transporter 3 Persons Diesel 6×4 Manual Transmission

Our Product Introduction

### Basic Information

- Place of Origin: China
- Brand Name: Dayun
- Model Number: Dayun four-wheel drive off-road grab cargo transporter 3 persons diesel 6×4 manual transmission
- Minimum Order Quantity: 1 vehicle
- Price: \$35,000-\$45000Dollar
- Packaging Details: Complete vehicle
- Delivery Time: 5-8 work days
- Payment Terms: T/T
- Supply Ability: 1000 vehicle

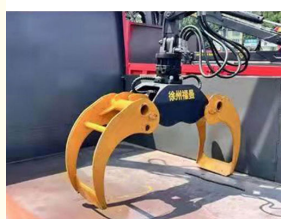


### Product Specification

- Highlight: 6×4 off road grab cargo transporter, Dayun off road grab cargo transporter



### More Images



for more products please visit us on [vehicle-automobile.com](http://vehicle-automobile.com)

## Product Description

### Paragraph 1: Function and Purpose

A four-wheel drive off-road grab-type goods transport vehicle is designed specifically for transporting goods in harsh road conditions and complex terrains. It features a powerful four-wheel drive system and a grab device, enabling excellent off-road performance and cargo transport capability in rugged mountainous areas, deserts, or other challenging environments.

### Paragraph 2: Body and Structure

This type of transport vehicle typically has a robust body and chassis structure to withstand harsh road conditions and challenging environments. It often features a high ground clearance and reinforced chassis to enhance maneuverability and resistance to crushing objects. The grab device is usually located at the rear of the vehicle for loading and unloading cargo.

### Paragraph 3: Powertrain System and Performance

Four-wheel drive off-road grab-type goods transport vehicles are typically equipped with a powerful four-wheel drive system and high-torque engine to deliver excellent off-road performance and traction. The powertrain system is specially tuned to adapt to harsh road conditions and heavy-duty work. These vehicles often have outstanding climbing ability, maneuverability, and load-carrying capacity.

### Paragraph 4: Grab Device and Cargo Transport Capability

The grab device is one of the key features of this type of transport vehicle. It typically consists of a robust lifting mechanism and a large-capacity cargo bucket for loading and unloading various types of goods. The design and functionality of the grab device can be adjusted based on specific requirements and can accommodate different types and sizes of cargo transport.

### Paragraph 5: Safety and Convenience Features

Four-wheel drive off-road grab-type goods transport vehicles are typically equipped with various safety and convenience features such as anti-lock braking systems (ABS), traction control systems (TCS), onboard cameras, and blind spot monitoring. These features contribute to improved driving safety, cargo transport efficiency, and operational convenience.

**Summary:** A four-wheel drive off-road grab-type goods transport vehicle is designed for transporting goods in harsh road conditions and complex terrains. It features a powerful off-road performance, high-torque powertrain system, and rugged body structure. The grab device provides efficient cargo loading and unloading capabilities. These vehicles are also equipped with various safety and convenience features, making them an ideal choice for safely and efficiently transporting goods in challenging environments.

#### The main technical parameters

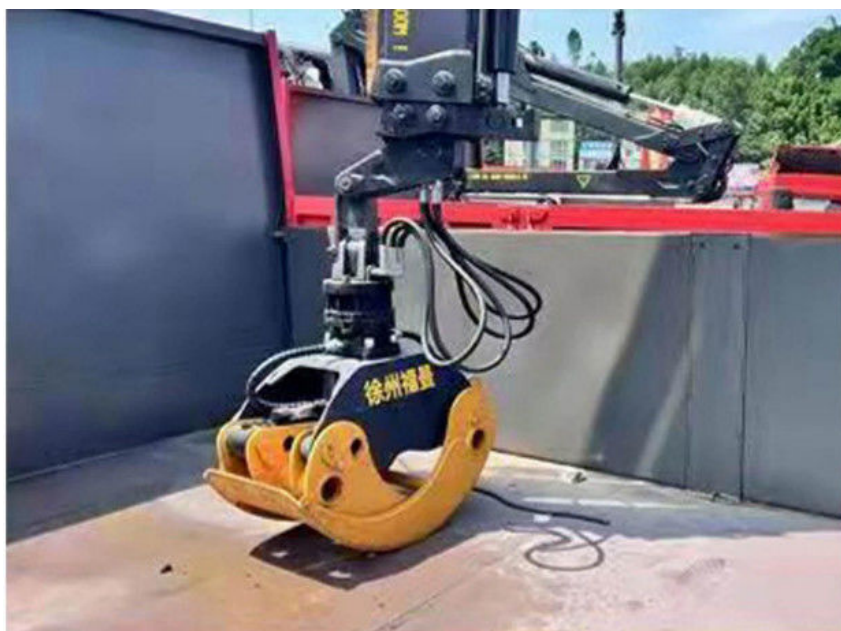
Dimensions:	7110×2450×3650(mm)	Cargo box size:	4500×2300×800(mm)
Total mass:	18000(Kg)	Load capacity utilization factor:	1.35,1.24
Overall weight:	9500(Kg)	Rated contained mass:	8770(Kg)
Trailer quality:	(Kg)	Semi-hung saddle:	
Anti-lock braking system:	have	Front seat passenger:	2,3(people)
Approach / departure angle:	30/18,30/15(°)	Frontsuspension/rear suspension:	1300/2000(mm)
Axle load:	6500/11500	Wheelbase:	3900(mm)
Number of axes:	2	Maximum speed:	80(km/h)
Fuel consumption:	27.6(L/100Km)	Number ofspring leaves:	9/11+8,
Number of tires:	6(pieces)	Tirespecifications:	10.00R20 18PR
Front track:	1740,1800(mm)	Rear wheelbase:	1705,1780,1840(mm)
Steering Type:	steering wheel	Starting method:	

#### Engine parameters

engine model:	Engine manufacturer	Displacement (ml)	Power(kw)/horsepower(PS):
YCS04160-68	Guangxi Yuchai Machinery Co., Ltd.	4156	118/160
YCS04200-68	Guangxi Yuchai Machinery Co., Ltd.	4156	147/199







**Sichuan Fushunte Automobile Co., Ltd.**



+8613568891631



609965408@qq.com



vehicle-automobile.com

No. 15, Wuxing 4th Road, Wuhou District, Chengdu City